

2581 FIRST STREET
ATWATER, CA 95301
BUS. (209) 358-6429
TOLL FREE (800) 921-SELL
FAX (209) 358-2356
www.gonellarealty.com

Lantana Estates, Phase 1, Merced CA

Location: East of Highway 59, North of W. Yosemite Avenue, on San Augustine Dr.

Data: 60 finished lots between 5200 & 10731 square fee

Development Info: City of Merced
678 W. 18th Street
Merced, CA 95340
209-385-6858
www.cityofmerced.org

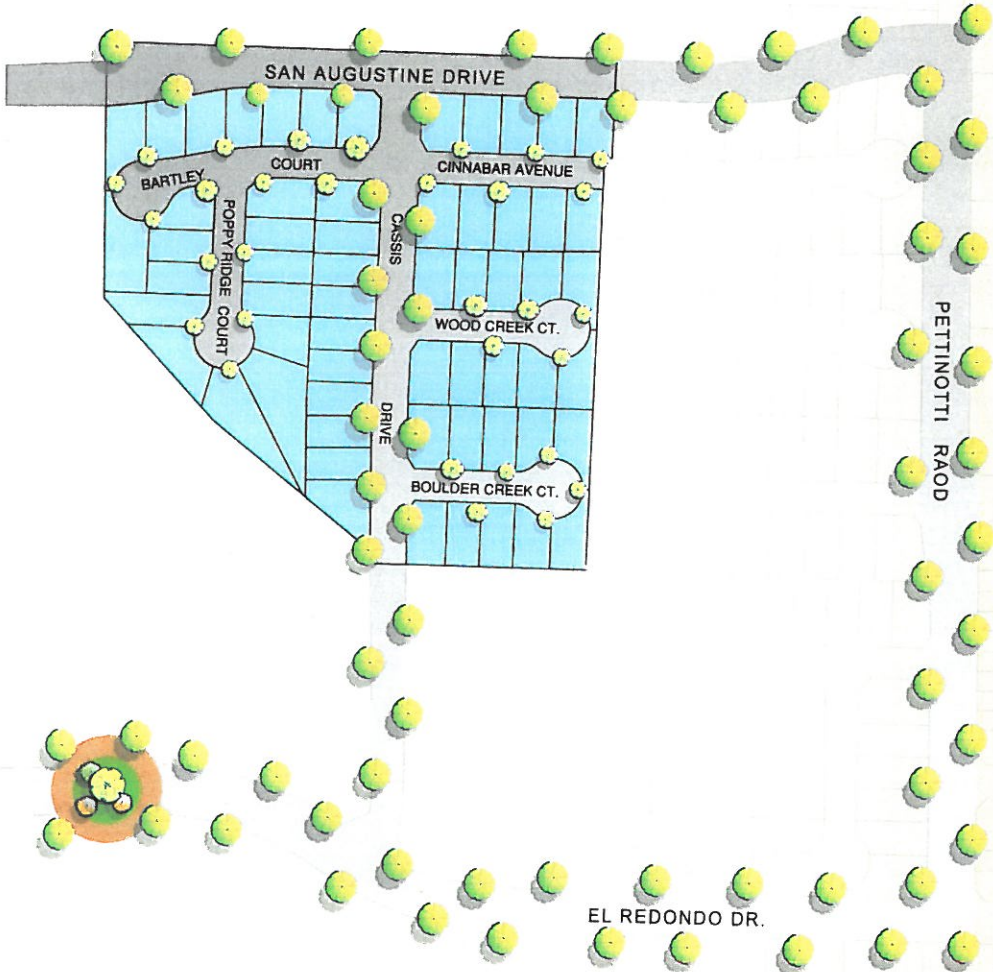
Terms: Submit

Price: \$1,170,000 (\$19,500 per finished lot)

Offered by: Andy Krotik
209-777-5070
andykrotik@mercedcountyland.com
www.MercedCounty.com

Exclusive Agents: Coldwell Banker Gonella Realty

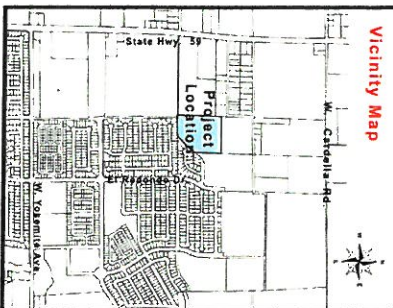
Lantana Subdivision - Phase I



GA
COURT VALLEY



STEINER DEVELOPMENT, INC.

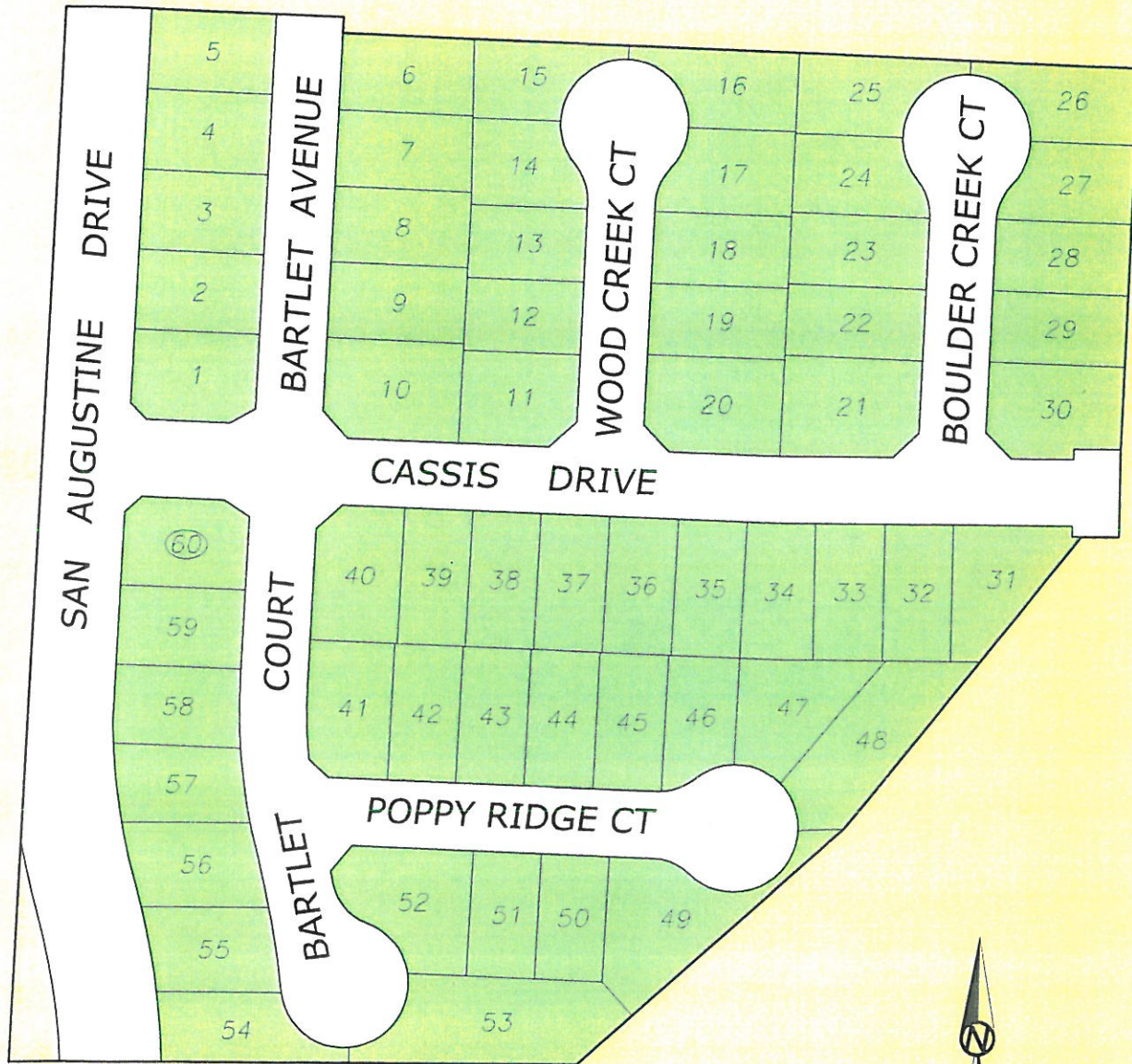


Subdivision

- Lantana Subdivision - Phase I
- Approximately: 12.1Ac.
- Total: 60 Lots
- Lot Size: 5,000 Sq. Ft. - 12,000 Sq. Ft.

LANTANA ESTATES PHASE 1

60 FINISHED LOTS, MERCED, CA



OFFERED BY:

ANDY KROTIK

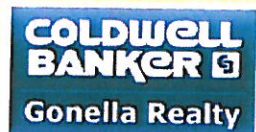
CELL: 209-777-5070

COLDWELL BANKER GONELLA REALTY

2581 FIRST STREET, ATWATER, CA 95301

PH: 209-358-6429 FX: 209-358-2356

E-MAIL: andykrotik@mercedcountyland.com WEB: www.mercedcountyland.com

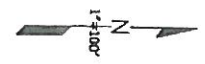
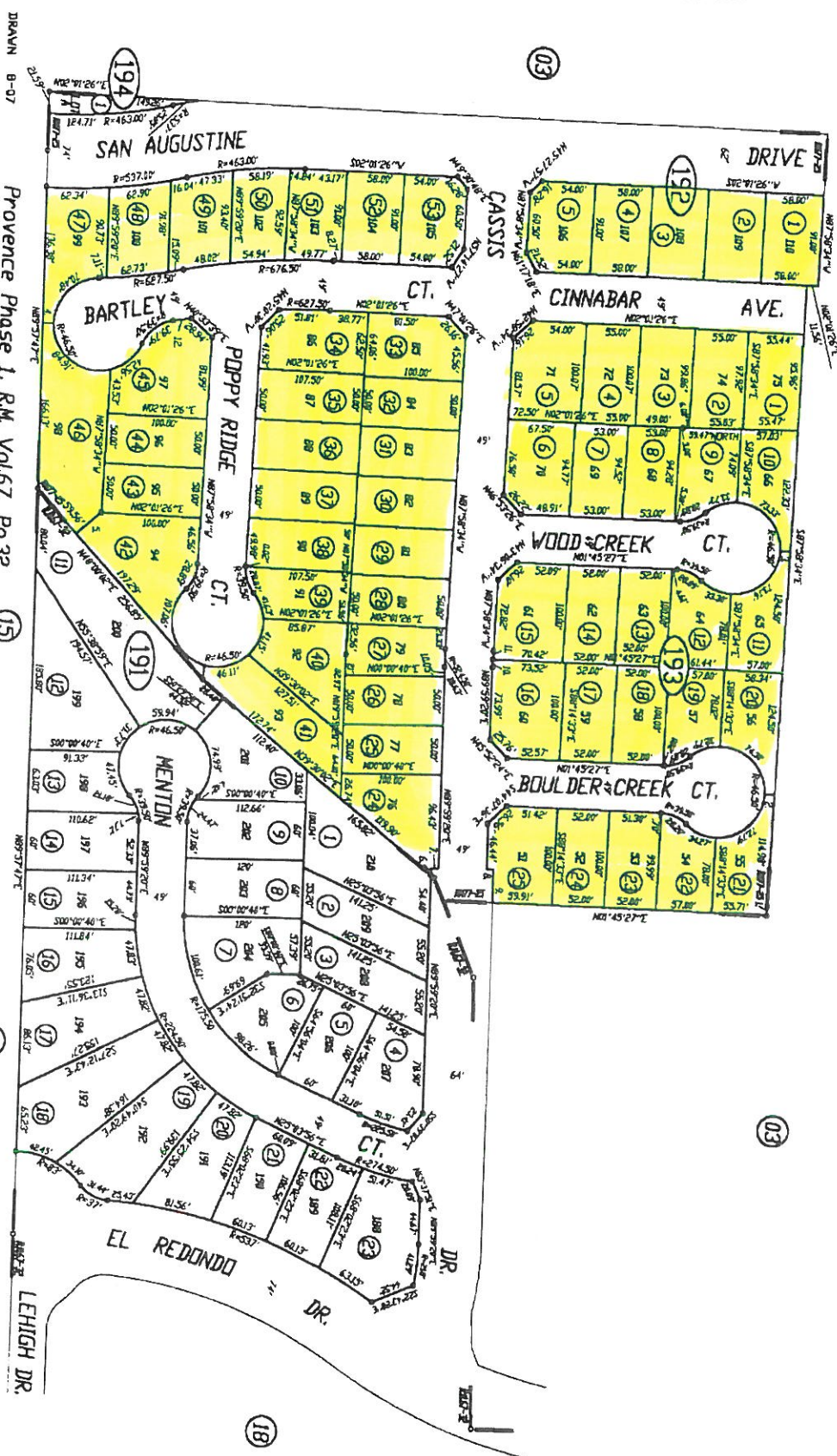


-NOTE-
 This map is for Assessment purposes only
 It is not to be construed as portraying
 legal ownership or divisions of land for
 purposes of zoning or subdivision law.

PDR. N. 1/2 SEC.12, T.7S.,R.13E., M.D.B.&M.

Tax Rate Area 005-021

206-19



1. 588'13.27'E 93.57'
2. N01°43'27"E 100'
3. N01°43'27"E 110'
4. N01°43'27"E 119'
5. S11°59'58"E 32.83'
6. S09°59'28"E 54.00'
7. N00°00'40"E 7.50'
8. S00°00'40"E 7.50'
9. S09°59'28"E 34.14'
10. S01°52'00"E 8.12'
11. S01°52'00"E 8.12'
12. S01°52'00"E 8.12'

DRAWN B-07
 Providence Phase 1, R.M. Vol.67, Pg.32
 Lantana Estates Phase 1, R.M. Vol.77, Pg.25

NOTE-Assessor's Block Numbers Shown in Ellipses
 Assessor's Parcel Numbers Shown in Circles

Assessor's Map Bk.206-Pg.19
 County of Merced, Calif.
 2005