



GONELLA REALTY
ATWATER

2581 FIRST STREET
ATWATER, CA 95301
BUS (209) 358-6429
TOLL FREE (800) 921-SELL
FAX (209) 358-2356
www.gonellarealty.com

Summerfield Subdivision, Merced CA

Location: South of Childs Avenue, West of Coffee Street

Data: 292 approved tentative map lots/ 64.05 acres

Development Info: City of Merced
678 W. 18th Street
Merced, CA 95340
209-385-6858
www.cityofmerced.org

Terms: Submit

Price: \$1,601,250 (\$25,000 per acre)

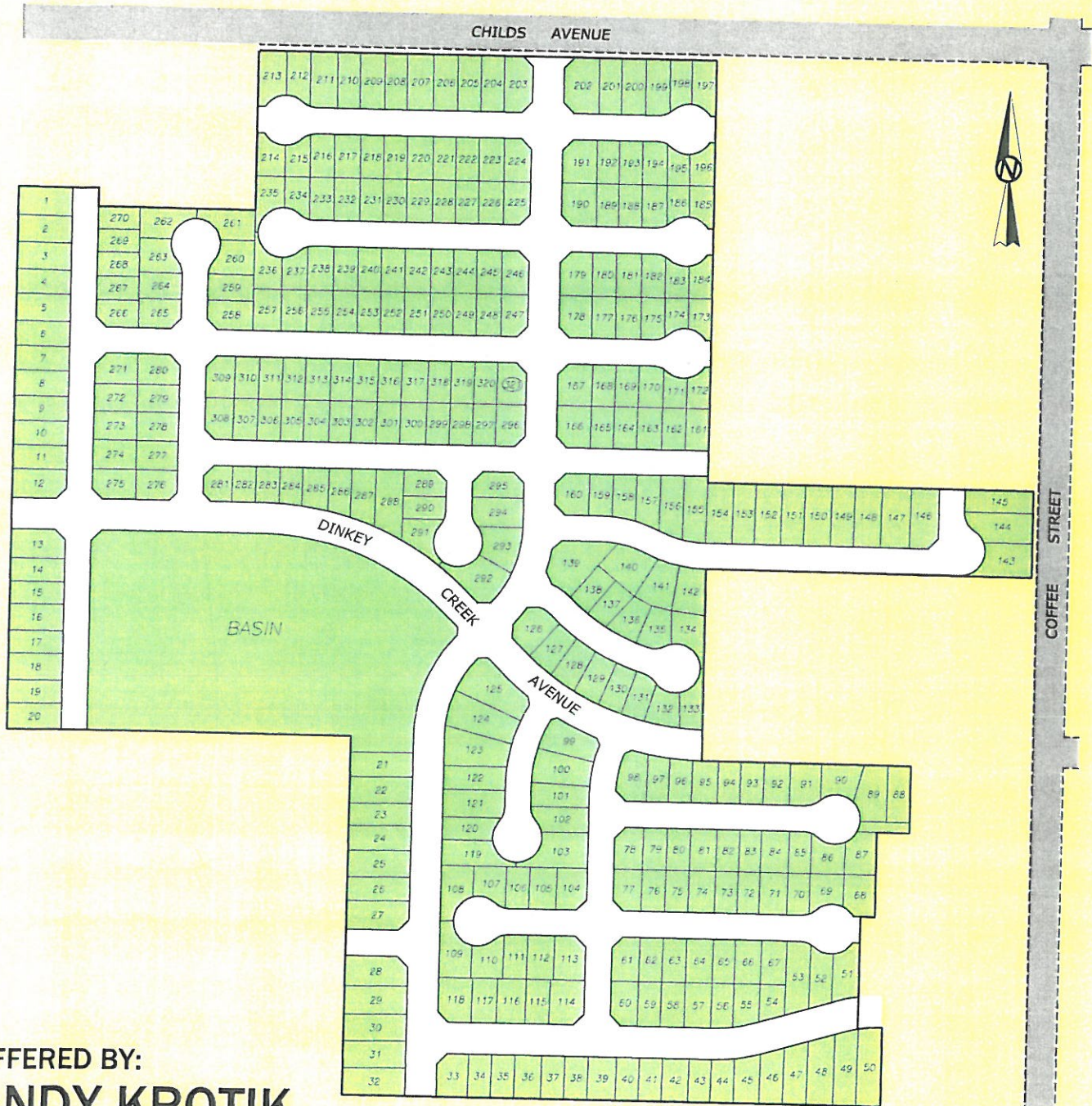
Offered by: Andy Krotik
209-777-5070
andykrotik@mercedcountyland.com
www.MercedCounty.com

Exclusive Agents: Coldwell Banker Gonella Realty

SUMMERFIELD

MERCED, CA

299 321 TENTATIVE MAP LOTS



OFFERED BY:

ANDY KROTIK

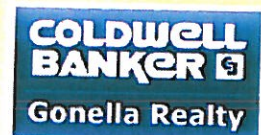
CELL: 209-777-5070

COLDWELL BANKER GONELLA REALTY

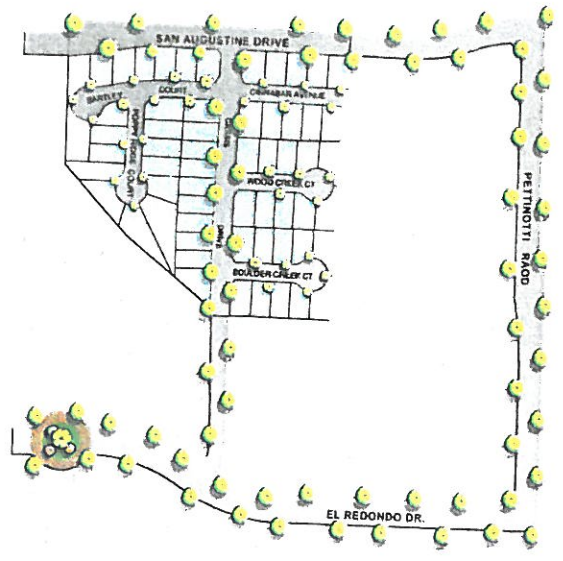
2581 FIRST STREET, ATWATER, CA 95301

PH: 209-358-6429 FX: 209-358-2356

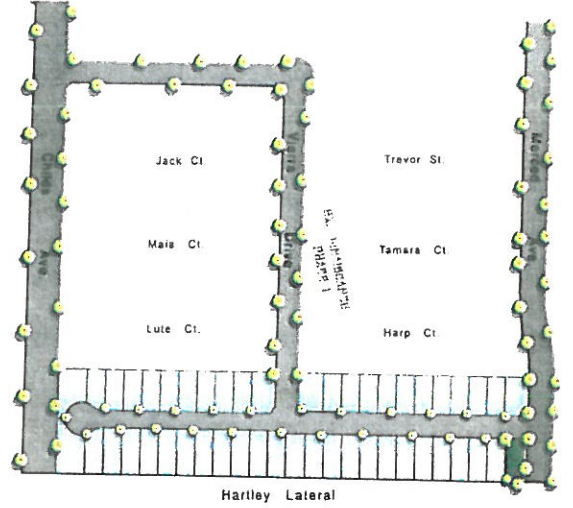
E-MAIL: andykrotik@aol.com WEB: www.mercedcountyland.com



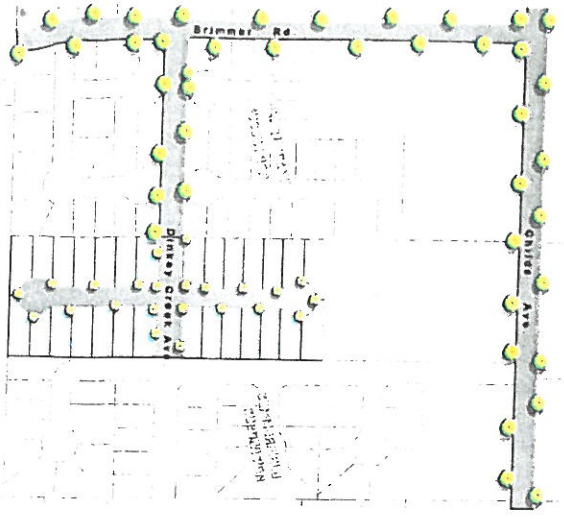
Lantana Subdivision



Tuscany East Subdivision

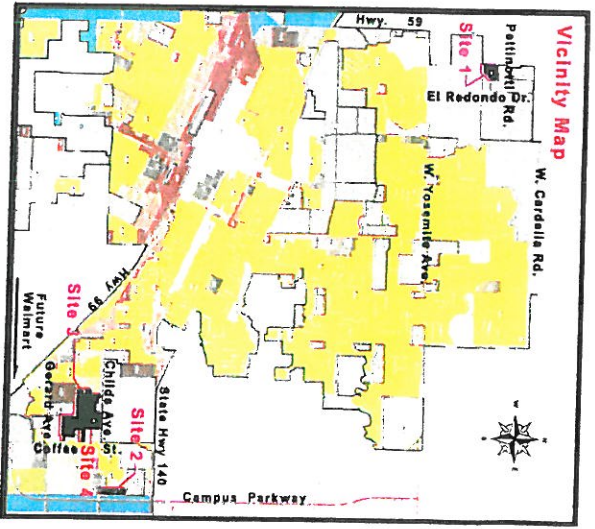


Summerfield Subdivision



Subdivisions:

- Site 1** Lantana Subdivision - Phase I
Total: 80 Lots
Lot Size: 5,000 Sq. Ft. - 12,000 Sq. Ft.
Approximately: 12.1 Ac.
- Site 2** Tuscany East Subdivision
Total: 47 Lots
Lot Size: 5,000 Sq. Ft. - 9,000 Sq. Ft.
Approximately: 8.5 Ac.
- Site 3** Hartley Crossings Subdivision
Total: 28 Lots
Lot Size: 6,000 Sq. Ft.
- Site 4** Summerfield Subdivision
Total: 292 Lots
Lot Size: 5,000 Sq. Ft. - 9,000 Sq. Ft.



STEINER DEVELOPMENT, INC.

714-941-1111